

Accessories and Peripheral Equipment for Cobots Overview

One Stop Shop for Cobot Accessories!
Contact EMI for Custom Solutions!



Solenoid Valve Kit

p.162



Cable Management Kit

p.166



Vacuum Generator Kit

p.164



Wrist Wrangler

p.167



Teachable Sensors

p.168



Tubing, Cables, Connectors

p.170



Fittings, Adaptors, Plugs



Shop Online!



Cobot Stands

p.188



Cobot Ready Conveyors

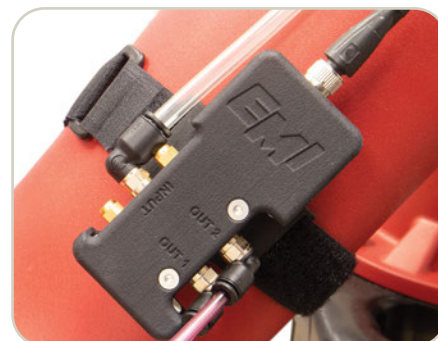
p.194



Cobot Solenoid Valve Kit



*One-Time Purchase!
Compatible with ALL
EMI Grippers!*



Cobot Solenoid Valve Kit

Quick#	Part#	Price	Wt.
8016	CRA-SVK-1	\$149.00	230g

Use Quick#s for easy online ordering.

- Simple, on-arm design with protective shroud and non-slip Velcro® strap to mount to the robot arm.
- Q#8067: 5/2 Solenoid Valve - Single - Solenoid, monostable.

EMI's **Solenoid Valve Kit** for Collaborative Robots is an essential add-on for all pneumatic applications. It enables you to actuate single acting (NO/NC) and double acting end effectors while using a single digital output and compressed air line. Includes a M8, 3-pole cable, 4mm and 6mm fittings, silencers, threaded and push plugs, neoprene padded strap and a 3D printed shroud. EMI's Cobot Solenoid Valve Kit is the cornerstone of all pneumatic end effectors.

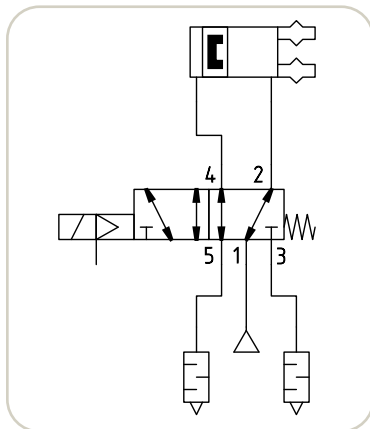




In-line Solenoid Valve

In-line valves are designed to be used as stand-alone units, no manifold required! All pneumatic connections are on the valve, open for equipping with your preferred fittings and tubing. The electrical connection to the solenoid is made through an M8 3-pin male plug. The solenoid is controlled by switching a 24Vdc monostable signal.

Electrical cables can be found on page 171.



#8068

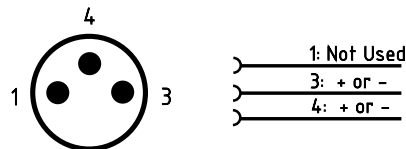


Festo 5/2 Size10 Solenoid Inline Valve

Quick#	Part#	Price	Style	Wt.
8067	VUVGL10M52-RTM5-1R8L	\$57.61	5 Port / 2 Position, Single Solenoid Valve M8, 3-pin Connector & M5 Ports	45g
Accessory				
8068	AMTE-M-H-M5	\$2.15	M5 Short Brass Silencer	

Click Quick# for more information.

Pin#	Function	Wire Color	Control Box Terminal
1	Not Used	Brown	N/A
3	Ground	Blue	0Vdc
4	Signal Wire	Black	Digital Output



**Extensive EOAT Inventory
in US & Mexico!**

Easy Online Ordering!

- Create Supply Lists
- Order from History
- Export Purchase Orders
- Track Orders

Product Pages Include:

- CAD file downloads
- 360° 3D Views
- Dimensional drawings
- Related items & Spare parts



Vacuum Generator Kit



- Housing made of lightweight impact-resistant plastic.
- Connection of compressed air and vacuum with push-in 6mm.
- Operating temp: 32–122° F.
- Operating pressure: 1–8 bar.
- Kit includes User Manual, Silencer, Velcro strap, 3-Pin Cable, and Clear PU tubing.

EMI's **Vacuum Generator Kit** operates off of a 24Vdc, mono-stable signal and is the ideal solution for vacuum EOAT. With an incorporated teachable vacuum switch, 3D printed housing and anti-slip straps, the VGK is a true plug and play solution for your cobot.

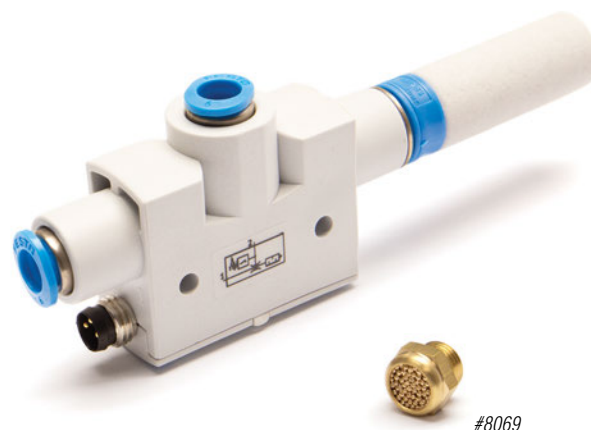
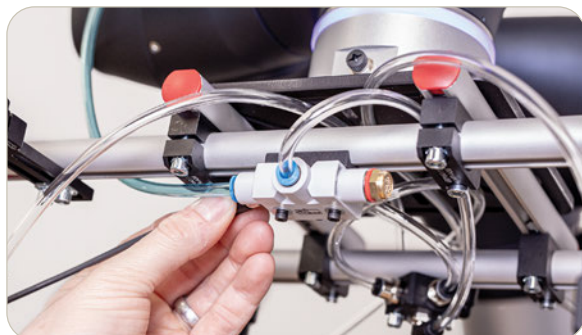
Vacuum Generator Kit with Teachable Vacuum Switch

Quick#	Part#	Tubing	Price
8021	CRA-VGK-1	Ø6mm	\$265.00



Vacuum Generator

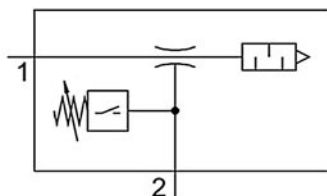
- High vacuum with integrated 3-pin M8 Male monitor switch and RO1 silencer included.
- Housing made of light, impact-resistant plastic.
- Switching output: PNP



Festo Vacuum Generator

Quick#	Part#	Price	Max Vacuum Level*	Max Suction Flow*	Air Consumption*	Standard Supply Pressure	Max Operating Pressure	Tubing OD Port	Overall Length**	Wt**
8091	VN10H-T4-PQ2-VQ2-O1P	\$205.00	93%	0.77 SCFM	1.97 SCFM	87 psi	116 psi	Ø6mm	107mm	36g

*Values listed are achieved when supplied the listed standard supply pressure.
 **Overall Length and weight with standard silencer (shown above). This is reduced when using Quick# 8069. Full dimensional drawing online.



Vacuum Generator Accessories

Quick#	Part#	Description	Price
8069	AMTE-M-H-G18	G1/8" Short Brass Silencer	\$2.50
244	GSF-G-G8	G1/8" Sealing Ring (use with #8069)	\$0.23

3-pin Sensor cables on page 171. Dimensional drawings online.

Vacuum Generators available from EMI:



Schmalz SEG



Schmalz SBP



PIAB COAX Pilnline



SMC ZU Series



PIAB Vacuum Pump



Gimatic Clampable

Shop Vacuum Generators!



Cable Management Kit



Cable Management Kit

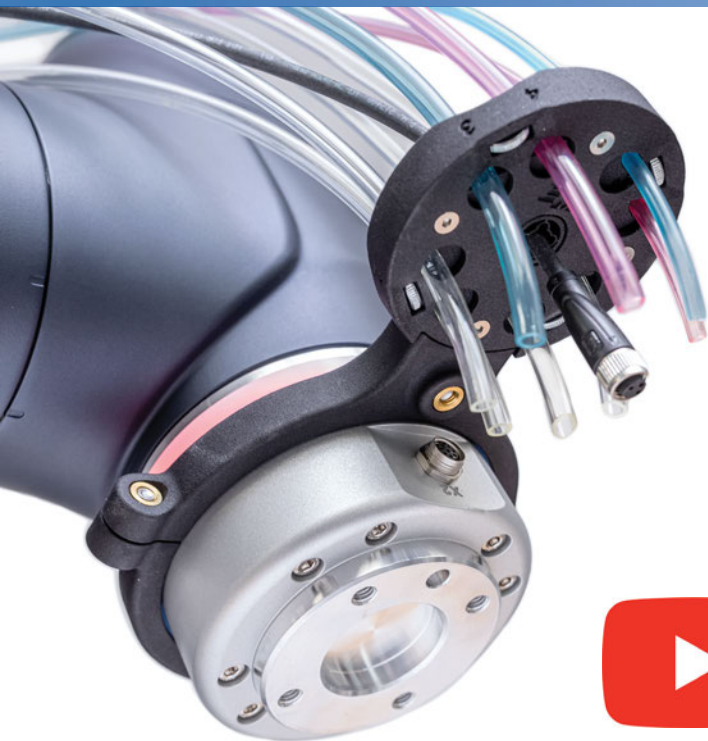
Quick#	Part#	Price	Wt.
8015	CRA-CMK-1	\$35.00	65g

Organize and secure pneumatic and electric lines running down your robot arm. Clamps have (4x) channels for tubing and cables up to 8mm diameter. Kit includes 2 clamps, one 12in. strap, and one 18in. strap that fit most Collaborative Robots.

Contact EMI for Custom Solutions!



Wrist Wrangler



[Click for our Wrist Wrangler Video!](#)

EMI's **Wrist Wrangler** is a cable and tubing management solution designed for collaborative robots. It clamps at the wrist of your robot and it helps organize cables and pneumatic lines for more complex EOAT or for multiple gripper tools. Available with Ø63mm, Ø75mm and Ø90mm robot wrist clamps, it can secure 8x conduits up to Ø10mm each with an additional grommet at the center for additional tubing and cables.

Wrist Wrangler

Quick#	Part#	Description	Price
8024	CRA-WW1-A3	Ø63mm Wrist Mount (for use with UR3)	\$184.00
8025	CRA-WW1-A5	Ø75mm Wrist Mount (for use with UR5)	\$189.00
8027	CRA-WW1-A10	Ø90mm Wrist Mount (for use with UR10 & UR16)	\$194.00

